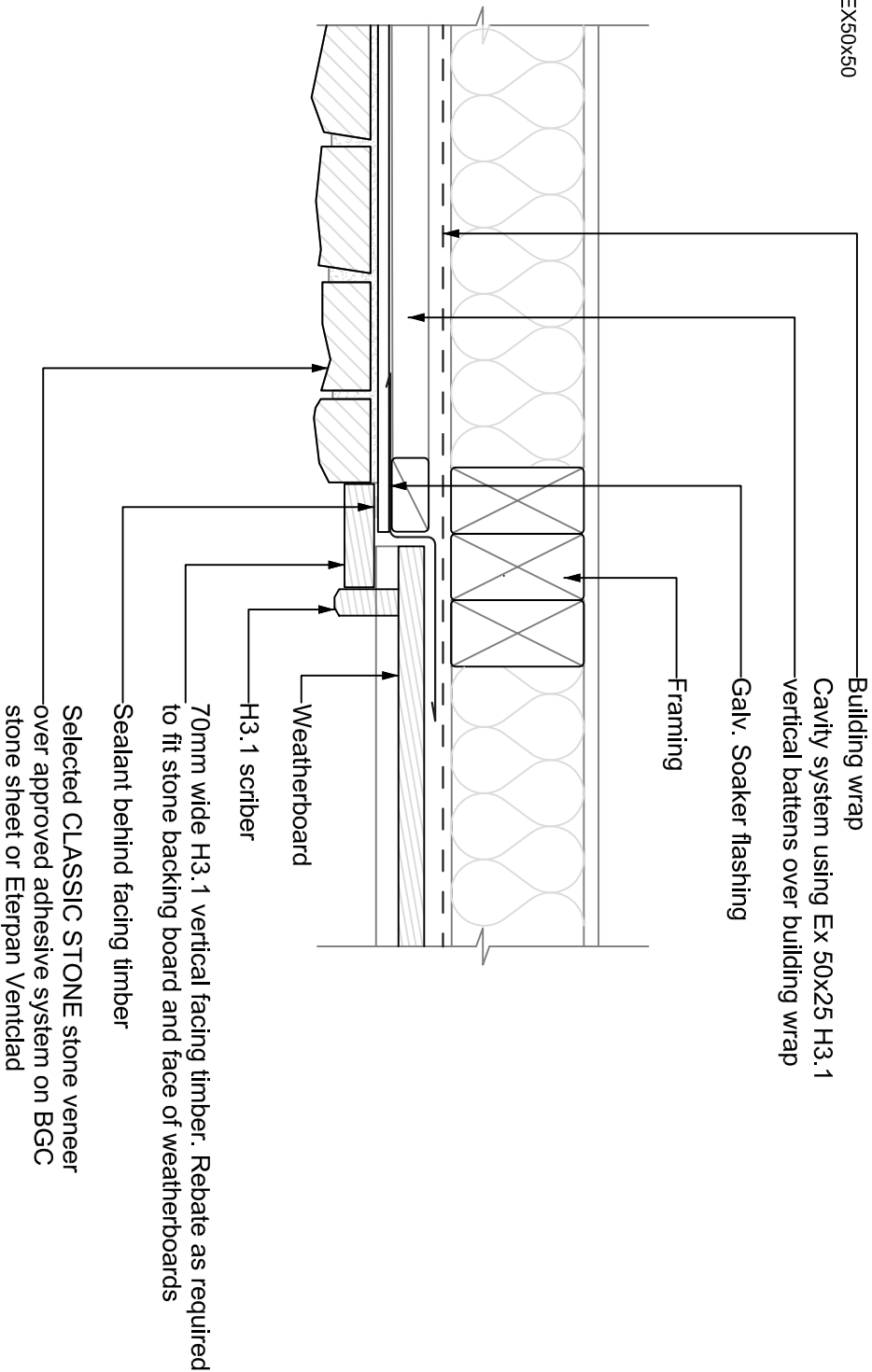


- Refer to CLASSIC STONE data spec sheet for suitable substrates and adhesives.
- In all cases ensure manufacturers instructions and fixing guides are followed.
- EX50x25 H3.1 battens can be substituted with EX50x50 H3.1 battens where appropriate.



## 7a - Typical Vertical Joint - Stone Veneer to Weatherboard - Direct Fix

**Disclaimer:**

Suggested construction details only. Designs must comply with current New Zealand Building Codes and be approved by Local Authority. CLASSIC STONE does not accept any liability for the above information which, to the best of our knowledge, is true and accurate.